

POLITECNICO DI BARI



# FACT SHEET 2024-2025

INTERNATIONAL RELATIONS OFFICE

# POLITECNICO DI BARI I BARI05

Via Amendola, 126/B – 70126 BARI - ITALY



# Main references

## INSTITUTIONAL ERASMUS+ COORDINATOR

*Name, Phone, Email*

*Dr. Antonella PALERMO*

*+39 080 596 2179*

*antonella.palermo@poliba.it*

## HEAD OF INTERNATIONAL RELATIONS OFFICE

*Name, Phone, Email*

*Dr. Rosilda SAMMARCO*

*+39 080 596 2582*

*rosilda.sanmarco@poliba.it*

## ERASMUS OFFICER

*Name, Phone, Email*

*Dr. Roberta MASCETTI*

*+39 080 596 2227*

*roberta.mascetti@poliba.it*

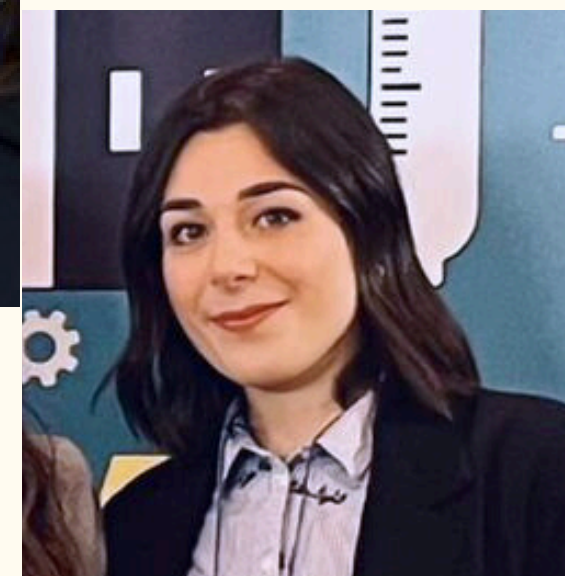
## ERASMUS OFFICER

*Name, Email*

*Dr. Antonella GUERRA*

*+39 080 596 2227*

*antonella.guerra@poliba.it*



## OFFICIAL WEBSITE

<http://www.poliba.it>

## COURSE CATALOGUE

[https://poliba.esse3.cineca.it/Guide/ListaFacoltaCorsi.do;jsessionid=4F3D68146A12D6843566BD2595C53CA2.esse3-poliba-prod-05?cod\\_lingua=eng](https://poliba.esse3.cineca.it/Guide/ListaFacoltaCorsi.do;jsessionid=4F3D68146A12D6843566BD2595C53CA2.esse3-poliba-prod-05?cod_lingua=eng)

## WEBSITE FOR DEPARTMENTAL INFORMATION

<http://dei.poliba.it/DEI-it/index.html>

<https://www.dipartimentoicar.it/>

<http://dmmm.poliba.it/>

<http://www.dicatech.poliba.it/index.php?id=258>





## APPLICATION DEADLINES

**Full year/Fall semester:**

30th June

**Spring Semester:**

30th November

## NOMINATION DEADLINES

**Full year/Fall semester:**

15th June

**Spring Semester:**

15th November

## ACADEMIC CALENDAR

**1st Semester (winter):** 1st October – 31st January (exams in January-February)

**2nd Semester (spring):** 1st March – 30th June (exams in July-September)

## EMAIL ADDRESS FOR NOMINATIONS

[international@poliba.it](mailto:international@poliba.it)



# Admission documents

- APPLICATION FORM
- LEARNING AGREEMENT  
**Maximum credits for semester: 30 ects.**  
**Maximum 60 ects for year.**
- ACADEMIC TRANSCRIPT OF RECORDS
- B1 ITALIAN OR ENGLISH CERTIFICATE OR ANY PROOF OF ITALIAN OR ENGLISH LANGUAGE KNOWLEDGE
- ID CARD/PASSPORT
- PHOTO



# Language of instruction

All courses are taught in Italian, except for the Master Degree Courses in:

- Industrial Design
- Mechanical Engineering
- Telecommunications Engineering
- Informatics Engineering
- Automation
- All Ph.D Courses

which are taught in English.

ITALIAN



# Language required

B1 level of Italian and B2 English

## LANGUAGE CERTIFICATE

Recommended but not compulsory

## LANGUAGE CENTER

<http://www.poliba.it/it/linguistico/centro-linguistico-di-ateneo>

## CONTACT PERSON

Dr. Valeria Marangio - [languages@poliba.it](mailto:languages@poliba.it)

---





# Departments and Coordinators



**ArCoD**  
Politecnico di Bari

DIPARTIMENTO DI ARCHITETTURA, COSTRUZIONE  
E DESIGN

## ARCHITECTURE

**INCOMING Students:** Prof.ssa Giulia Annalinda NEGLIA  
[giuliaannalinda.neglia@poliba.it](mailto:giuliaannalinda.neglia@poliba.it)

**OUTGOING Students:** Prof. Domenico PASTORE  
[domenico.pastore@poliba.it](mailto:domenico.pastore@poliba.it)



# Departments and Coordinators



**ArCoD**  
Politecnico di Bari

DIPARTIMENTO DI ARCHITETTURA, COSTRUZIONE  
E DESIGN

## INDUSTRIAL DESIGN

**INCOMING Students:** Prof. Vincenzo Paolo BAGNATO  
[vincenzopaolo.bagnato@poliba.it](mailto:vincenzopaolo.bagnato@poliba.it)

**OUTGOING Students:** Prof.ssa Rosa PAGLIARULO  
[rosa.pagliarulo@poliba.it](mailto:rosa.pagliarulo@poliba.it)



# Departments and Coordinators



DIPARTIMENTO DI INGEGNERIA CIVILE,  
AMBIENTALE, DEL TERRITORIO, EDILE E DI CHIMICA

**BUILDING ENGINEERING  
BUILDING-ARCHITECTURE ENGINEERING**

Prof. Francesco IANNONE

[francesco.iannone@poliba.it](mailto:francesco.iannone@poliba.it)

**CIVIL AND ENVIRONMENTAL ENGINEERING**

Prof.ssa Francesca DE SERIO

[francesca.deserio@poliba.it](mailto:francesca.deserio@poliba.it)



# Departments and Coordinators



**AUTOMATION –  
ELECTRICAL – ELECTRONIC – COMPUTER  
SCIENCE – TELECOMMUNICATIONS  
ENGINEERING**

**INCOMING Students:** Prof. Maurizio SPADAVECCHIA  
maurizio.spadavecchia@poliba.it

**OUTGOING Students:** Prof. Guido MAIONE  
guido.maione@poliba.it



# Departments and Coordinators



## MANAGEMENT ENGINEERING

**INCOMING Students:** Prof. Claudio SASSANELLI  
claudio.sassanelli@poliba.it

**OUTGOING Students:** Prof.ssa Roberta PELLEGRINO  
roberta.pellegrino@poliba.it



# Departments and Coordinators



## MECHANICAL ENGINEERING

**INCOMING Students:** Prof. Fulvio LAVECCHIA  
[fulvio.lavecchia@poliba.it](mailto:fulvio.lavecchia@poliba.it)

**OUTGOING Students:** Prof. Marco TORRESI  
[marco.torresi@poliba.it](mailto:marco.torresi@poliba.it)





In the Italian university system, each course unit is graded on a scale from 18 to 30 points, (minimum 18 – maximum 30). To pass a course unit, a student must receive a grade of at least 18 points out of 30. “30 e lode” is a special mention for outstanding performance.

As a rule non-passing grades are simply not awarded, and the exam is not registered in the student's career.

For the final degree, a 111-point scale is used. Passing grades are 66 to 110, with the additional superior grade “110 e lode” (110 cum laude). The mark for the final degree is given on the basis of all marks obtained in exams, and on the evaluation of the final thesis.

# Italian grading System



European Health Insurance Card, compulsory for all EU students.  
A private insurance coverage is highly recommended.

# Safety and Health



# Immigration Requirements



EU students (except Turkish): identity card or Passport.

Non European and Turkish students must arrive with a student visa, whose application can be made at the Italian Diplomatic and Consular Authorities in your country of residence. In order to find out whether you need an entry visa or not you can simply use the database of the Italian Ministry of Foreign Affairs. You will be asked to enter their nationality, country of residence, length and reason of the stay.



# Guide for International Incoming Students

<http://www.poliba.it/it/internazionale/studyingpoliba-international-students>



# Accommodation Service

Our Institution doesn't provide reserved places at Student House; students are required to find accommodation by themselves.

The support in finding accommodation can be provided by:

ESN Bari (<http://www.esnbari.org>);

International Community Erasmus Bari (IC BARI), (<https://www.facebook.com/whiteandrederasmusland/?ref=bookmarks>);

CampusX Bari (<http://www.campusxbari.it>);

CercoAlloggio Bari (<https://www.cercoalloggio.com/#!/international>);

HousingAnywhere (<https://housinganywhere.com/s/Bari--Italy>);

Erasmus Play for Incoming and Outgoing students (<https://erasmusplay.com/it/>)



enjoy



#Erasmus+

Politecnico di Bari - International Relations Office